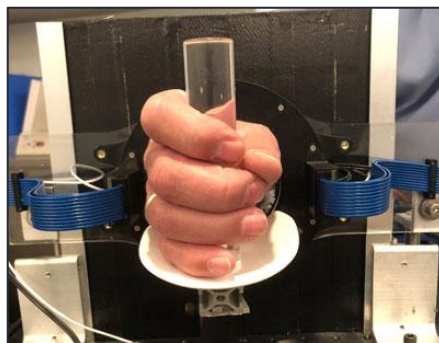


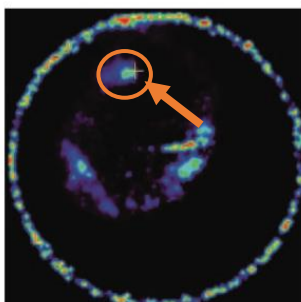
Unlock the true potential of theranostics treatments

Providing improved data quantification for PET imaging protocols*

The ArterialPET™ is a compact, non-invasive Positron Emission Tomograph (PET) scanner that circles the wrist or ankle. It determines the arterial input function essential for quantitative PET imaging, allowing all PET to provide additional information on the state of a disease or effectiveness of therapy. ArterialPET™ is a non-invasive alternative to the arterial catheter and allows the use of quantitative metabolic modeling which is a substantial improvement on the estimates that Standard Uptake Value (SUV) provides.



ArterialPET™ Wrist Ring



(a) Transaxial View

Cross section of wrist artery†

Using PET to Improve PET

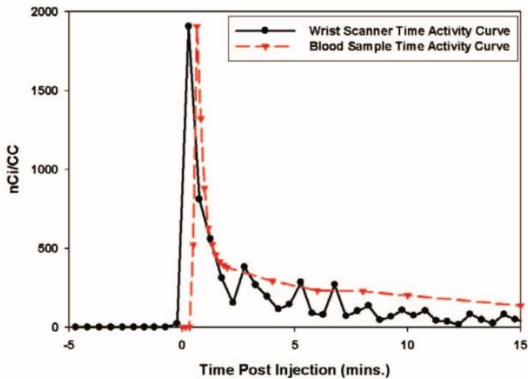
This small, light-weight PET scanner placed around the wrist or ankle allows tomographic imaging of the patient artery away from core background counts completely independent of the clinical PET scanner. The accurate measurement of the radiotracer Input Function from these images allows improved quantification for the PET diagnostics already being used today, and is a key parameter in emerging theranostic treatments.

Non-Invasive and More Accurate Input Function*

- ✓ Small PET Detector Ring for wrist or ankle, depending on protocol
- ✓ Light Weight: Detector Ring Assembly ~1.8 lbs (0.82kg)
- ✓ Input Function modeling without catheter sampling

*Initial unit(s) in beta testing. Currently for investigational purposes only.

Time Activity Curve - Blood Sample Analysis TAC vs. Wrist Scanner TAC



Patient Input Function Curve, ArterialPET™ Prototype*



Lightweight, low power detector ring provides multiple options for patient placement†

Detector Specifications

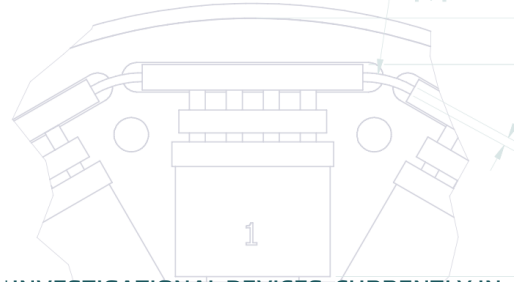
Ring Specification	Value
Scintillator Material	LYSO
Outer Diameter	152mm
Bore Diameter	88mm
Transaxial FOV	75mm
Axial FOV	18mm
Crystal Size	2.2 x 2.2 x 20mm
Block Array Size	4 x 8
Total Detector Blocks	24
Resolution Center FOV	<1.8 mm
Energy Resolution	18%

†Courtesy Brookhaven National Laboratory

System Specifications

System Specification	Value
Detector Ring Weight	1.8 lbs. (0.82 kg)
System Cart Weight	90 lbs. (23 kg)
Power Input	110 - 240VAC, 50/60Hz 10 Amps

Preliminary Specifications subject to change



*INVESTIGATIONAL DEVICES, CURRENTLY IN DEVELOPMENT. LIMITED BY FEDERAL (OR UNITED STATES) LAW TO INVESTIGATIONAL USE. NOT CURRENTLY AVAILABLE FOR COMMERCIAL SALE

Corporate Office
25 Health Sciences Drive
Stony Brook, NY 11790

Phone: (631) 775-8909
Email: info@synchropet.com

© Copyright 2020 SynchroPet



**Creating new opportunities in
PET & MRI imaging.**